

GEI Consultants Golden Algae Screen

Prepared: May 7, 2026

Prepared By: GreenWater Laboratories/Andrew Chapman

<u>Sample ID</u>	<u>Site</u>	<u>Collected</u>
CL10-GA	Canyon Lake	5 May 2026
CL09-GA	Canyon Lake	5 May 2026
CL09-5m	Canyon Lake	5 May 2026
CL08-GA	Canyon Lake	5 May 2026
CL07-GA	Canyon Lake	5 May 2026

Method

One mL aliquots of live samples were transferred to Utermöhl Counting Chambers. Samples were scanned for the presence of Golden Algae (*Prymnidium parvum*) using a Nikon Eclipse Ti-2 Inverted Microscope equipped with phase contrast optics and epifluorescence. Additional one mL aliquots were lightly preserved with Lugol's Iodine solution, allowed to settle and 50 random fields were counted at 600X to estimate *P. parvum* densities.

CL10-GA

Estimated cell density of *Prymnidium parvum* (Fig. 1) was 7,707 cells/mL.

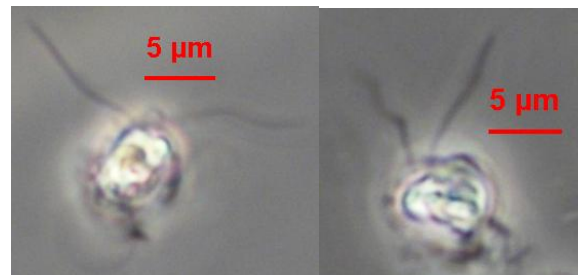


Fig. 1 *Prymnidium parvum* 600X Live (l), Lugol's Preserved (r)

CL09-GA

Estimated cell density of *Prymnidium parvum* (Fig. 2) was 7,372 cells/mL.

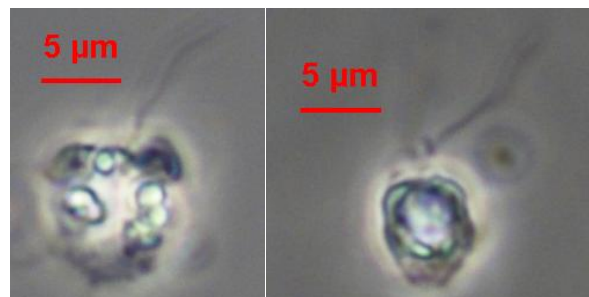


Fig. 2 *Prymnidium parvum* 600X Live (l), Lugol's Preserved (r)

CL09-5m

Estimated cell density of *Prymnesium parvum* (Fig. 3) was 670 cells/mL.

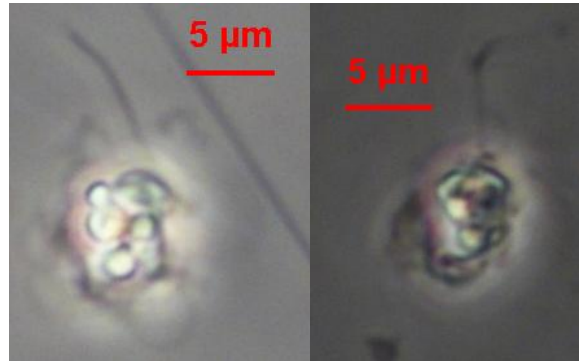


Fig. 3 *Prymnesium parvum* 600X Live (l), Lugol's Preserved (r)

CL08-GA

Estimated cell density of *Prymnesium parvum* (Fig. 4) was 1,676 cells/mL.

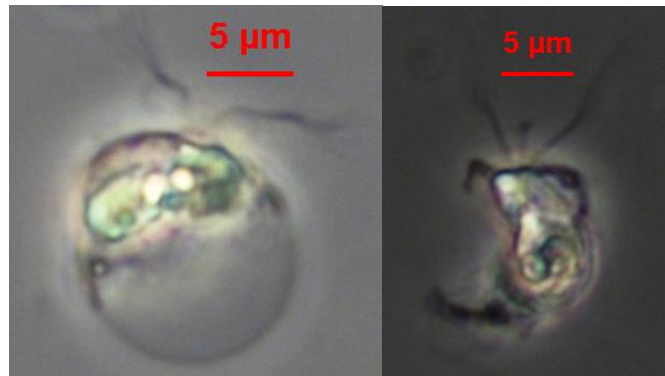


Fig. 4 *Prymnesium parvum* 600X Live (l), Lugol's Preserved (r)

CL07-GA

Estimated cell density of *Prymnesium parvum* (Fig. 5) was 4,691 cells/mL.

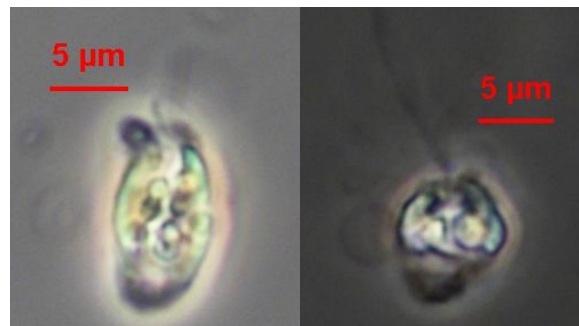


Fig. 5 *Prymnesium parvum* 600X Live (l), Lugol's Preserved (r)

Submitted by:



Date:

May 7, 2026

Andrew D. Chapman

*The results in this report relate only to the samples listed above.
This report shall not be reproduced except in full without written approval of the laboratory.*