

GEI Consultants Golden Algae Screen

Prepared: March 12, 2026

Prepared By: GreenWater Laboratories/Andrew Chapman

<u>Sample ID</u>	<u>Site</u>	<u>Collected</u>
CL 10-GA	Canyon Lake	11 March 2026
CL 09-GA	Canyon Lake	11 March 2026
CL 08-GA	Canyon Lake	11 March 2026
CL 07-GA	Canyon Lake	11 March 2026

Method

One mL aliquots of samples lightly preserved with Lugol's Iodine Solution were transferred to Utermöhl Counting Chambers and allowed to settle. To estimate *P. parvum* densities, 50 to 100 random fields were counted at 600X or 200X using a Nikon Eclipse Ti-2 Inverted Microscope equipped with phase contrast optics.

CL 10-GA

Estimated cell density of *Prymnesium parvum* (Fig. 1) was 13,739 cells/mL.

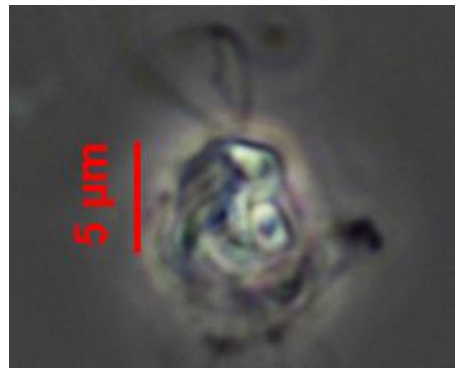


Fig. 1 *Prymnesium parvum* 600X Lugol's Preserved

CL 9-GA

Estimated cell density of *Prymnesium parvum* (Fig. 2) was 12,399 cells/mL.



Fig. 2 *Prymnesium parvum* 600X Lugol's Preserved

CL 08-GA

No *Prymnesium parvum* was observed.

CL 07-GA

No *Prymnesium parvum* was observed.

Submitted by:



Date:

March 12, 2026

Andrew D. Chapman

The results in this report relate only to the samples listed above.

This report shall not be reproduced except in full without written approval of the laboratory.