

## GEI Consultants Golden Algae Screen

Prepared: January 16, 2026

Prepared By: GreenWater Laboratories/Madison Clark

<u>Sample ID</u>	<u>Site</u>	<u>Collected</u>
CL 10-GA	Canyon Lake	15 January 2026
CL 09-GA	Canyon Lake	15 January 2026
CL 08-GA	Canyon Lake	15 January 2026
CL 07-GA	Canyon Lake	15 January 2026

### Method

One mL aliquots of live samples were transferred to Utermöhl Counting Chambers. Samples were scanned for the presence of Golden Algae (*Prymnesium parvum*) using a Nikon Eclipse Ti-2 Inverted Microscope equipped with phase contrast optics and epifluorescence. Additional one mL aliquots were lightly preserved with Lugol's Iodine solution, allowed to settle and 50 random fields were counted at 400X or 200X to estimate *P. parvum* densities.

### CL 10-GA

Estimated cell density of *Prymnesium parvum* (Fig. 1) was 14,726 cells/mL.



Fig. 1 *Prymnesium parvum* 400X Live (l), Lugol's Preserved (r)

### CL 9-GA

Estimated cell density of *Prymnesium parvum* (Fig. 2) was 2,356 cells/mL.

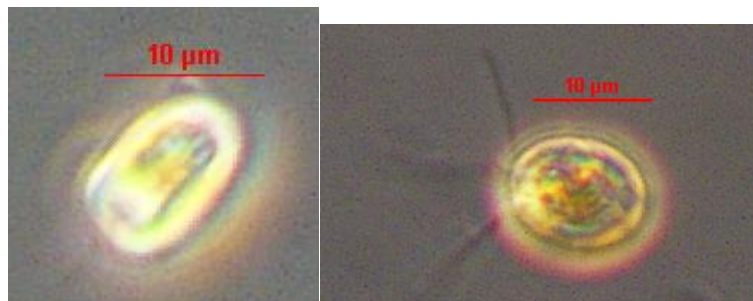


Fig. 2 *Prymnesium parvum* 400X Live (l), Lugol's Preserved (r)

## CL 08-GA

Estimated cell density of *Prymnesium parvum* (Fig. 3) was 1,649 cells/mL.

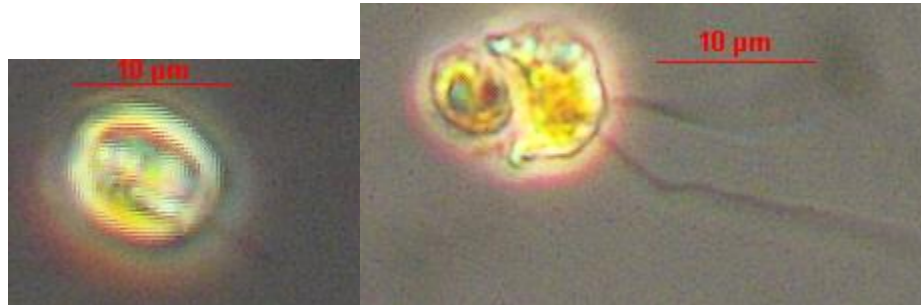


Fig. 3 *Prymnesium parvum* 400X Live (l), Lugol's Preserved (r)

## CL 07-GA

Estimated cell density of *Prymnesium parvum* (Fig. 4) was 471 cells/mL.

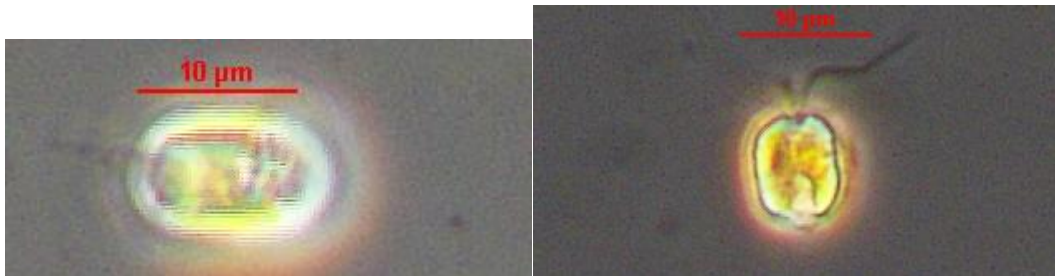


Fig. 4 *Prymnesium parvum* 400X Live (l), Lugol's Preserved (r)

Submitted by:

*Andrew D. Chapman*

Andrew D. Chapman

Date: January 16, 2026

*The results in this report relate only to the samples listed above.*

*This report shall not be reproduced except in full without written approval of the laboratory.*