

GEI Consultants Golden Algae Screen

Prepared: January 12, 2026

Prepared By: GreenWater Laboratories/Andrew Chapman

<u>Sample ID</u>	<u>Site</u>	<u>Collected</u>
CL 10-GA	Canyon Lake	8 January 2026
CL 09-GA	Canyon Lake	8 January 2026
CL 08-GA	Canyon Lake	8 January 2026
CL 07-GA	Canyon Lake	8 January 2026

Method

One mL aliquots of live samples were transferred to Utermöhl Counting Chambers. Samples were scanned for the presence of Golden Algae (*Prymnesium parvum*) using a Nikon Eclipse Ti-2 Inverted Microscope equipped with phase contrast optics and epifluorescence. Additional one mL aliquots were lightly preserved with Lugol's Iodine solution, allowed to settle and 50 random fields were counted at 600X or 200X to estimate *P. parvum* densities.

CL 10-GA

Estimated cell density of *Prymnesium parvum* (Fig. 1) was 17,090 cells/mL.

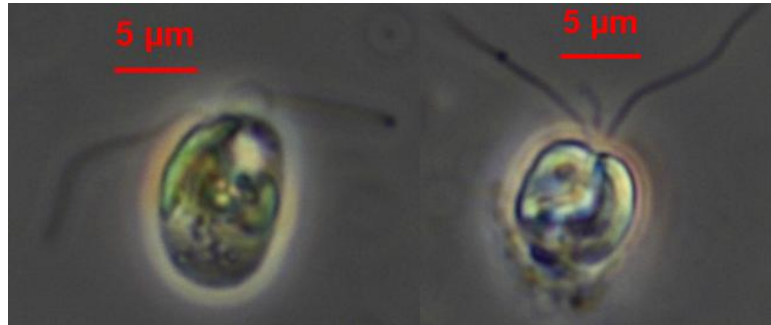


Fig. 1 *Prymnesium parvum* 600X Live (l), Lugol's Preserved (r)

CL 9-GA

Estimated cell density of *Prymnesium parvum* (Fig. 2) was 6,032 cells/mL.

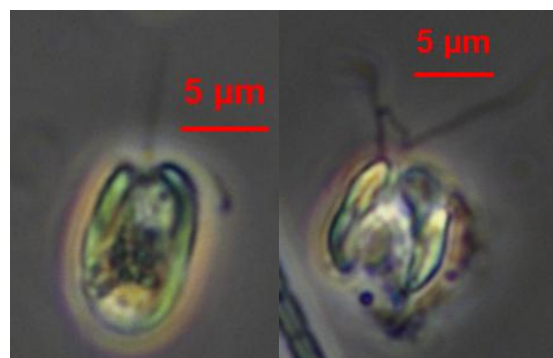


Fig. 2 *Prymnesium parvum* 600X Live (l), Lugol's Preserved (r)

CL 08-GA

Estimated cell density of *Prymnesium parvum* (Fig. 3) was 38 cells/mL.

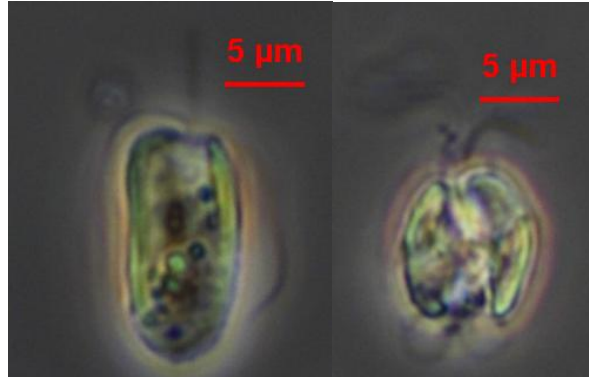


Fig. 3 *Prymnesium parvum* 600X Live (l), Lugol's Preserved (r)

CL 07-GA

Estimated cell density of *Prymnesium parvum* (Fig. 3) was 75 cells/mL.

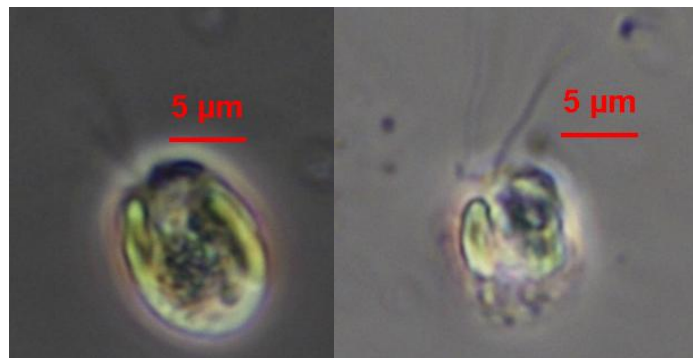
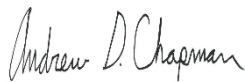


Fig. 4 *Prymnesium parvum* 600X Live (l), Lugol's Preserved (r)

Submitted by:



Andrew D. Chapman

Date: January 12, 2026

*The results in this report relate only to the samples listed above.
This report shall not be reproduced except in full without written approval of the laboratory.*