

GEI Consultants Golden Algae Screen

Prepared: December 22, 2025

Prepared By: GreenWater Laboratories/Andrew Chapman

<u>Sample ID</u>	<u>Site</u>	<u>Collected</u>
CL 10-GA	Canyon Lake	18 December 2025
CL 09-GA	Canyon Lake	18 December 2025
CL 08-GA	Canyon Lake	18 December 2025
CL 07-GA	Canyon Lake	18 December 2025

Method

One mL aliquots of samples lightly preserved with Lugol's Iodine solution were transferred to Utermöhl Counting Chambers and allowed to settle. Fifty random fields were counted at 600X using a Nikon Eclipse Ti-2 Inverted Microscope equipped with phase contrast optics to estimate Golden algae (*Prymnesium parvum*) densities.

CL 10-GA

Estimated cell density of *Prymnesium parvum* (Fig. 1) was 10,723 cells/mL.

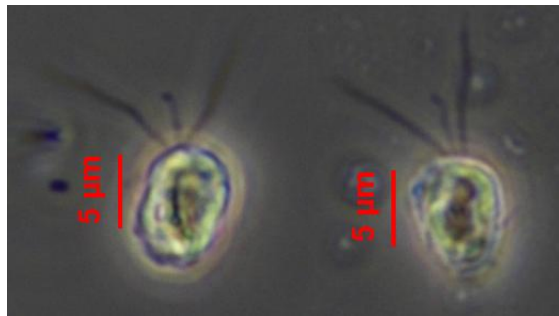


Fig. 1 *Prymnesium parvum* 600X Lugol's Preserved

CL 9-GA

Estimated cell density of *Prymnesium parvum* (Fig. 2) was 4,356 cells/mL.

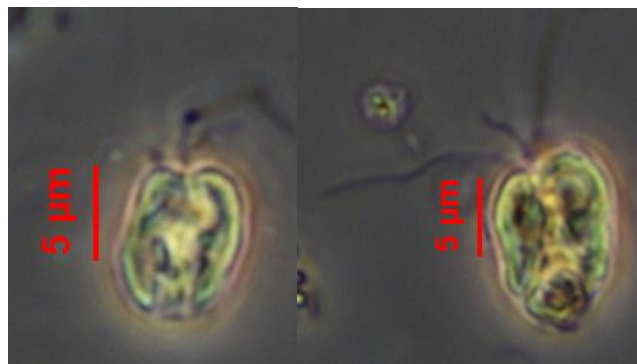


Fig. 2 *Prymnesium parvum* 600X Lugol's Preserved

CL 08-GA

No viable *Prymnesium parvum* was observed.

CL 07-GA

No viable *Prymnesium parvum* was observed.

Submitted by:



Date: December 22, 2025

Andrew D. Chapman

The results in this report relate only to the samples listed above.

This report shall not be reproduced except in full without written approval of the laboratory.