

## GEI Consultants Golden Algae Screen

Prepared: October 16, 2025

Prepared By: GreenWater Laboratories/Andrew Chapman

<u>Sample ID</u>	<u>Site</u>	<u>Collected</u>
CL-10	Canyon Lake	13 October 2025
Holiday Harbor	Canyon Lake	13 October 2025

### Method

One mL aliquots of live sample were transferred to Utermöhl Counting Chambers. Sample were scanned for the presence of Golden Algae (*Prymnesium parvum*) using a Nikon Eclipse Ti-2 Inverted Microscope equipped with phase contrast optics and epifluorescence. Additional one mL aliquots were lightly preserved with Lugol's Iodine solution, allowed to settle and 50 random fields were counted at 600X to estimate *P. parvum* densities.

### CL-10

Estimated cell density of *Prymnesium parvum* (Fig. 1) was 6,367 cells/mL.

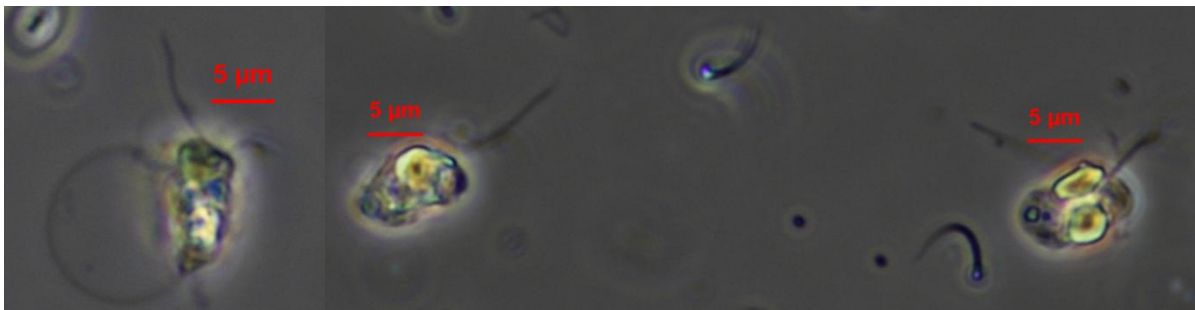


Fig. 1 *Prymnesium parvum* 600X Live (l), Lugol's Preserved (r)

### Holiday Harbor

Estimated cell density of *Prymnesium parvum* (Fig. 2) was 4,021 cells/mL.

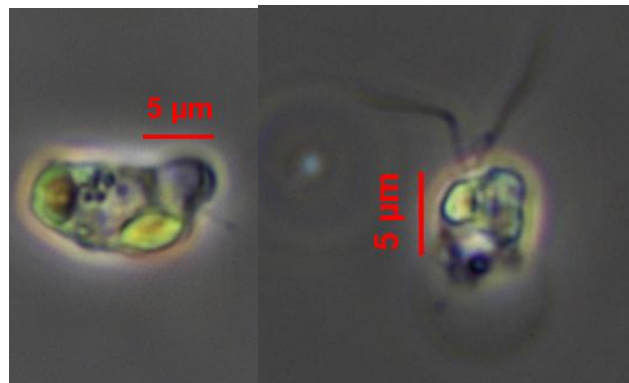


Fig. 2 *Prymnesium parvum* 600X Live (l), Lugol's Preserved (r)

Submitted by:



Date: October 16, 2025

Andrew D. Chapman

*The results in this report relate only to the samples listed above.*

*This report shall not be reproduced except in full without written approval of the laboratory.*